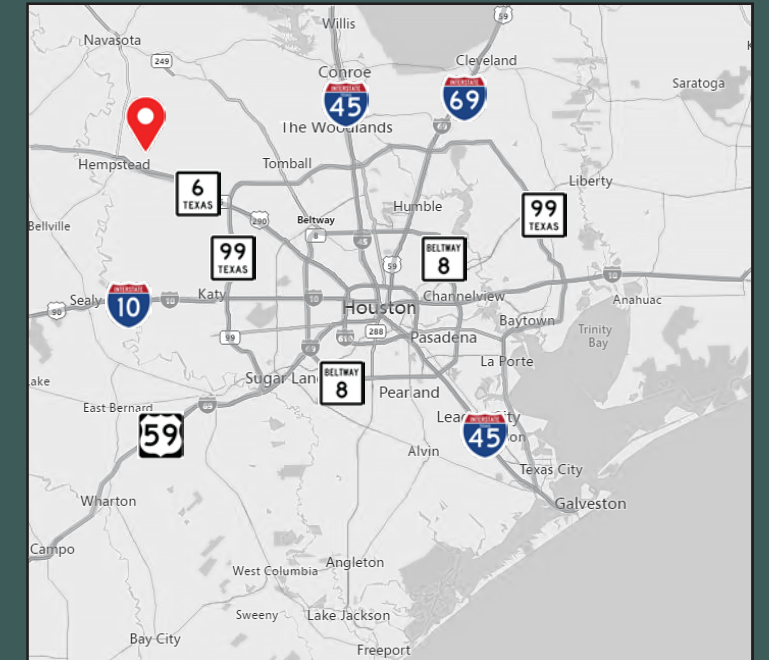
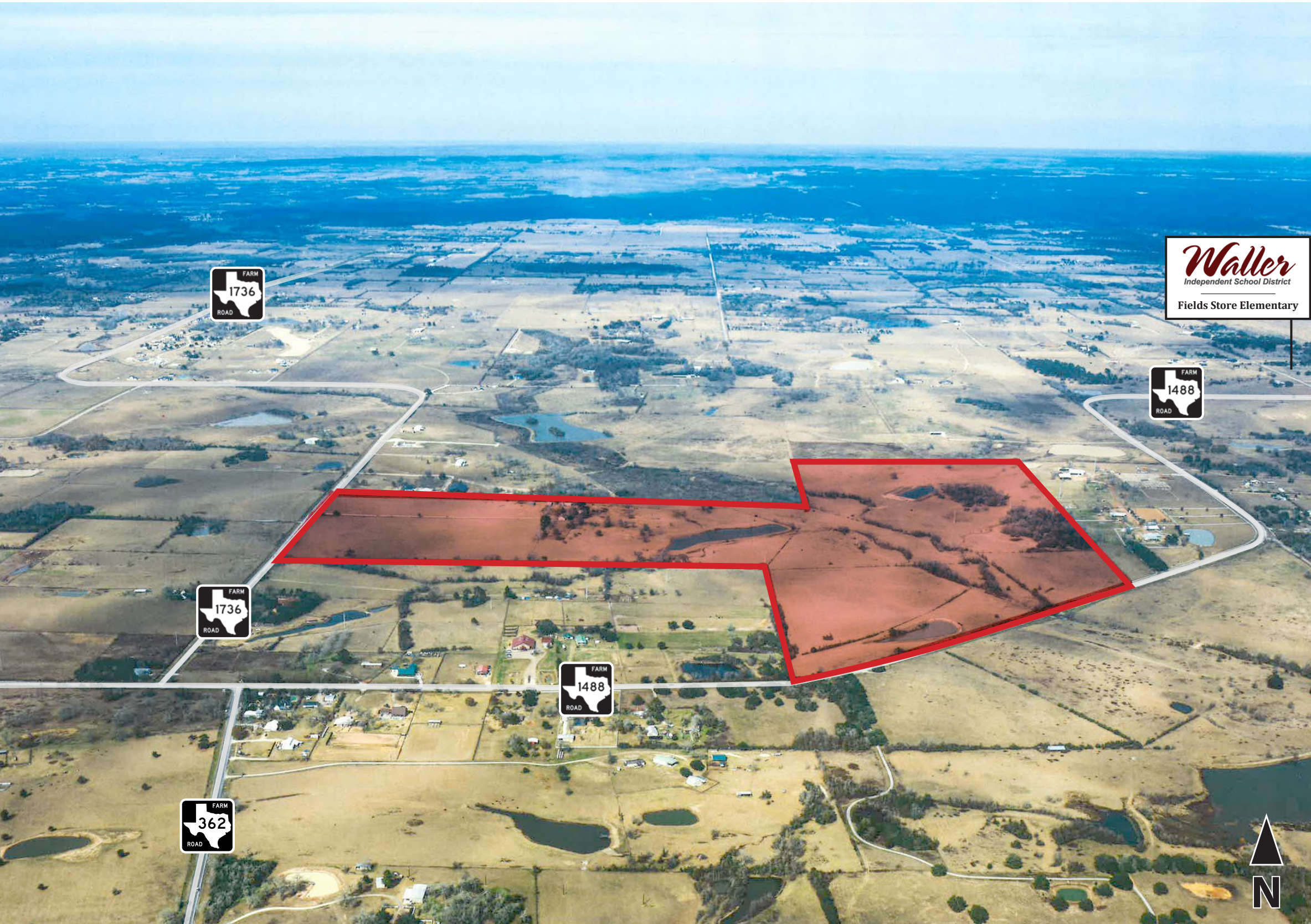


Land for Sale:

±225 Acres

Harris/Waller County, TX



Contact

Tommy LeBlanc, Partner
tleblanc@mlbcre.com

Blake Steele, Senior Associate
bstele@mlbcre.com

John-Michael Kamel, Vice President
jmkamel@mlbcre.com

mlbcre.com | (713) 622-1400

Market Overview

2025 TAXES - HARRIS COUNTY		
3	WALLER ISD	1.0626
40	HARRIS COUNTY	0.38096
41	HARRIS CO FLOOD CONTROL	0.04966
42	PORT OF HOUSTON AUTHORITY	0.0059
43	HARRIS CO HOSP DIST	0.18761
44	HARRIS CO EDUC DEPT	0.004798
678	WALLER-HARRIS ESD 200	0.1
TOTAL		1.791528

2025 TAXES - WALLER COUNTY		
ESD	WALLER-HARRIS ESD 200	0.1
GWA	WALLER COUNTY	0.532596
RFM	WALLER COUNTY FM	0.023591
SWR	WALLER ISD	1.0626
CAD	WALLER CAD	0
TOTAL		1.718787



The Team



Tommy LeBlanc

Partner

tleblanc@mlbcre.com

(713) 304-4521



John-Michael Kamel

Vice President

jmkamel@mlbcre.com

(713) 818-4007



Blake Steele

Senior Associate

bsteele@mlbcre.com

(832) 628-9788