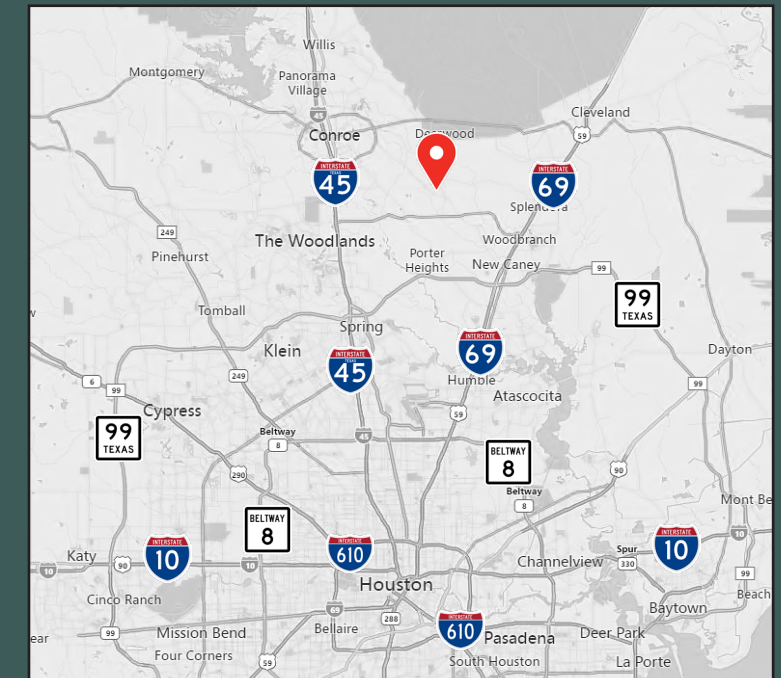


Land for Sale:

13.103 AC

Hwy 242, Near FM 1314
Conroe, TX



Contact

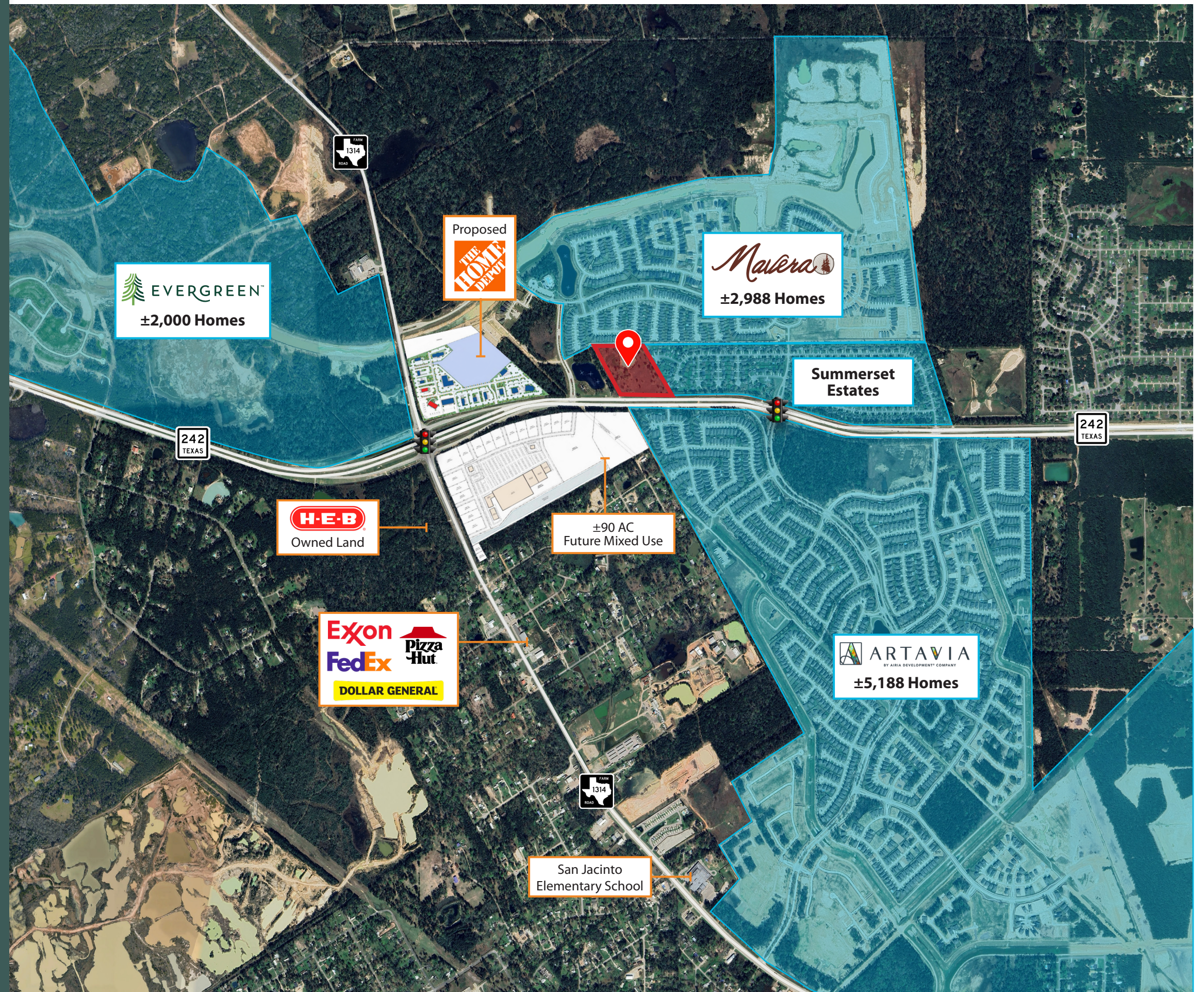
Tommy LeBlanc, Partner
tleblanc@mlbcre.com

John-Michael Kamel, Vice President
jmkamel@mlbcre.com

mlbcre.com | (713) 622-1400

Property Details & Area Overview

- **PRICE:** Call for Pricing
- **LOCATION:** Located in Montgomery County on Hwy 242
- **SIZE:** 13.103 AC
- **FRONTAGE:** ±821 of frontage on Hwy 242
- **UTILITIES:** Available from adjacent MUD. Annexation into MUD required.
- **ZONING:** None
- **ENCUMBRANCES:**
 - Floodplain: None
 - Pipelines: None
- **SCHOOL DISTRICT: Conroe ISD**
 - San Jacinto Elementary
 - Grangerland Intermediate
 - Moorhead Junior High School
 - Caney Creek High School



Property Information

2023 Tax Rates

District	Description	2023 Rate
F09	Emergency Ser Dist #9	0.1000
GMO	Mongtomery County	0.3696
HM1	Mont Co Hospital	0.0498
JNH	Lone Star College	0.1076
SCO	Conroe ISD	0.9621
Total		1.5891

*MUD Tax: Est. 1.35% - Montgomery Co MUD 191

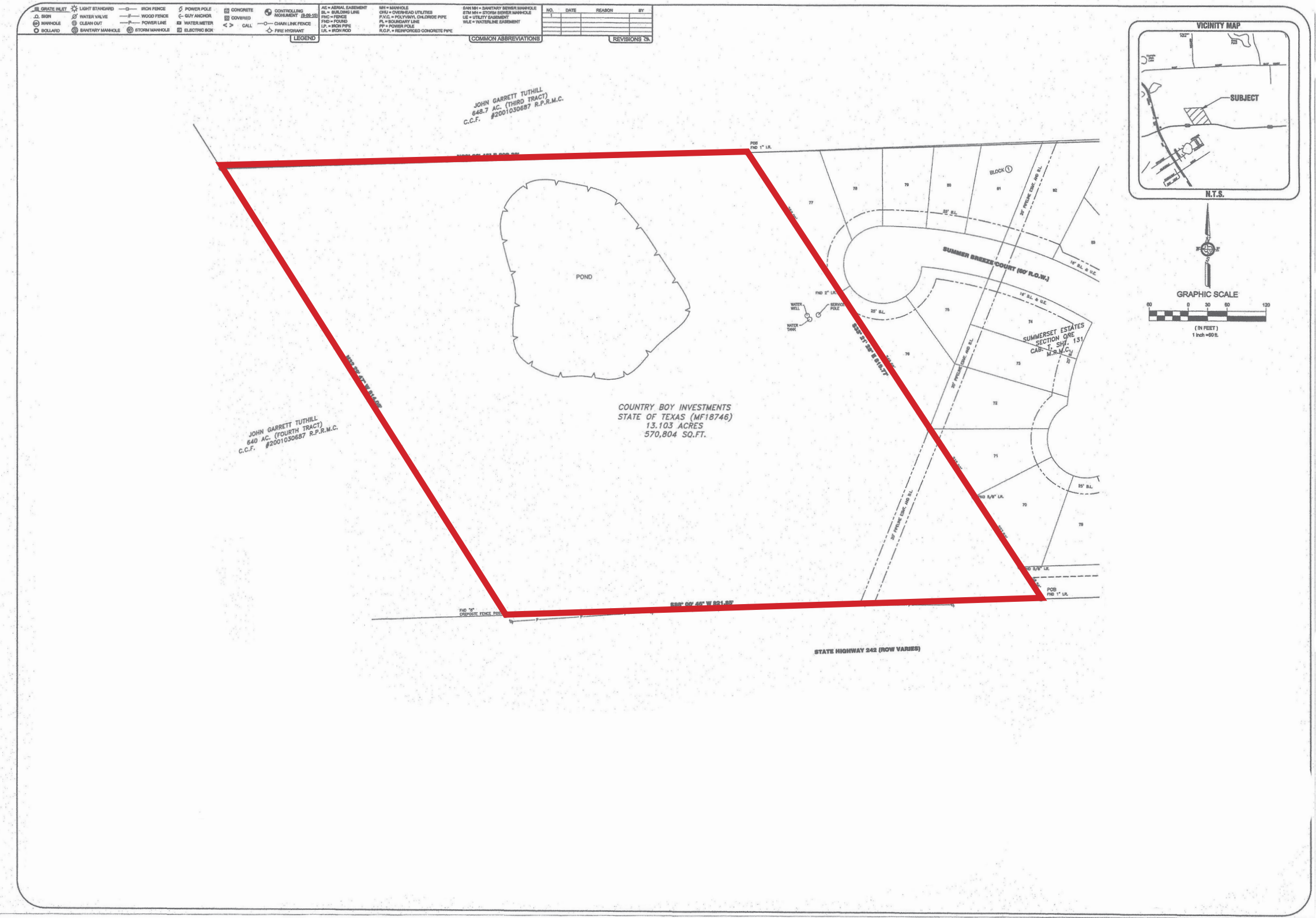
Demographics & Traffic Counts

Population		
1 Mile		3 Miles
2,113		9,923
Average Household Income		
1 Mile		3 Miles
\$119,146		\$93,176
Traffic Counts		
FM 1314		19,883 CPD
Hwy 242		13,577 CPD

Source: CoStar



Property Survey



The Team



Tommy LeBlanc

Partner

tleblanc@mlbcre.com

(713) 304-4521



John-Michael Kamel

Vice President

jmkamel@mlbcre.com

(713) 818-4007



Blake Steele

Senior Associate

bsteele@mlbcre.com

(832) 628-9788